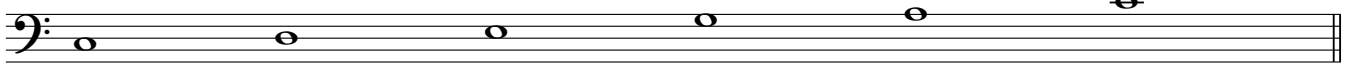
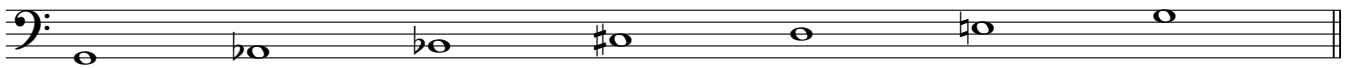


Modos utilizados

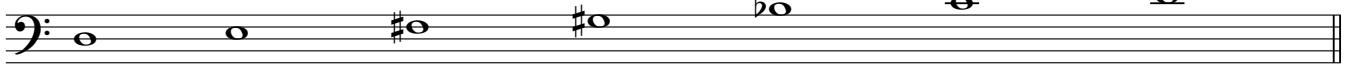
I - Modo Pentatônico



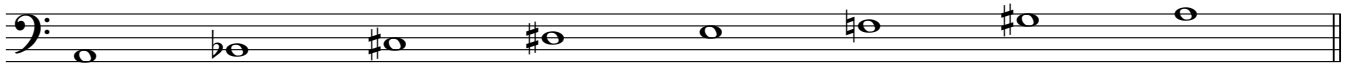
II- Frígio - Lídio - Dórico - Hexatona (Tritonal Menor)



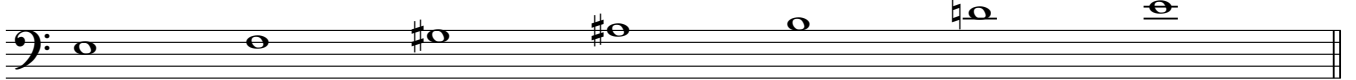
III - Tons Inteiros



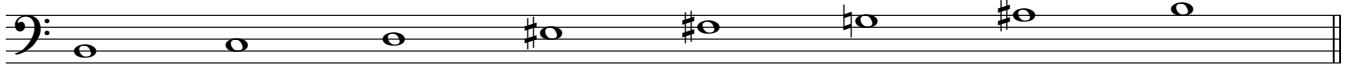
IV - Lídio - Frígio - Harmônico



V - Lídio - Frígio - Mixolídio - Hexatona (Tritonal Maior)



VI- Frígio - Lídio - Harmônico



VII - Lídio - Mixolídio



VIII- Otatônico - 1/2 tom - 1 tom

